



STATEMENTS OF FINANCIAL POSITION

June 30, 2011 and 2010

ASSETS	2011	2010
Cash and cash equivalents	\$2,476,755	\$ 76,514
Investments	4,075,760	5,015,186
Pledges receivable, net	1,162,754	1,526,933
Sundry receivables	417,197	212,932
Inventory	165,850	81,212
Prepaid expenses	412,118	301,012
Property and equipment, net	848,984	539,106
Other assets	77,305	113,513
TOTAL ASSETS	<u>\$9,636,723</u>	<u>\$7,866,408</u>
LIABILITIES AND NET ASSETS		
Liabilities		
Accounts payable	\$ 498,639	\$ 491,790
Accrued expenses	189,925	373,009
Grant obligations	2,167,535	1,241,747
Deferred lease liability	413,728	
Capital lease obligations	25,882	33,653
Total Liabilities	3,295,709	2,140,199
Net Assets		
Unrestricted	5,331,835	4,411,773
Temporarily restricted	1,009,179	1,314,436
Total Net Assets	<u>6,341,014</u>	<u>5,726,209</u>
TOTAL LIABILITIES AND NET ASSETS	<u>\$9,636,723</u>	<u>\$7,866,408</u>

STATEMENTS OF ACTIVITIES

Years ended June 30, 2011 and 2010

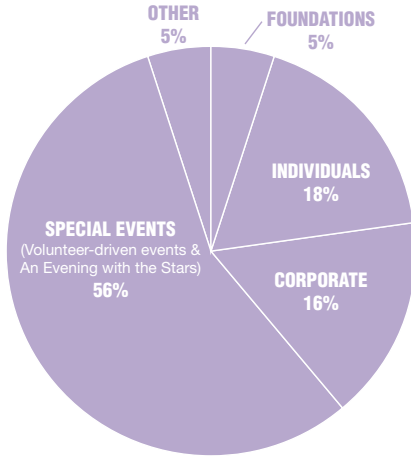
INCOME	2011	2010
Contributions	\$ 5,079,721	\$ 5,587,415
Special events, net*	7,316,650	5,711,899
Store sales, net	234,447	161,384
Net investment return and other	372,162	356,215
TOTAL INCOME	<u>13,002,980</u>	<u>11,816,913</u>
EXPENSES		
Program Services		
Research	3,916,466	3,083,975
Advocacy	1,582,822	1,442,993
Patient services	2,274,340	2,024,907
Community Outreach	3,050,217	2,514,045
Total Program Services	<u>10,823,845</u>	<u>9,065,920</u>
Supporting Services		
General and administrative	406,765	341,283
Fund-raising	1,157,565	921,631
Total Supporting Services	<u>1,564,330</u>	<u>1,262,914</u>
TOTAL EXPENSES	<u>12,388,175</u>	<u>10,328,834</u>
INCREASE IN NET ASSETS	<u>\$ 614,805</u>	<u>\$ 1,488,079</u>

* Special events are presented net of direct costs of \$1,287,601 and \$1,162,750 in 2011 and 2010, respectively.

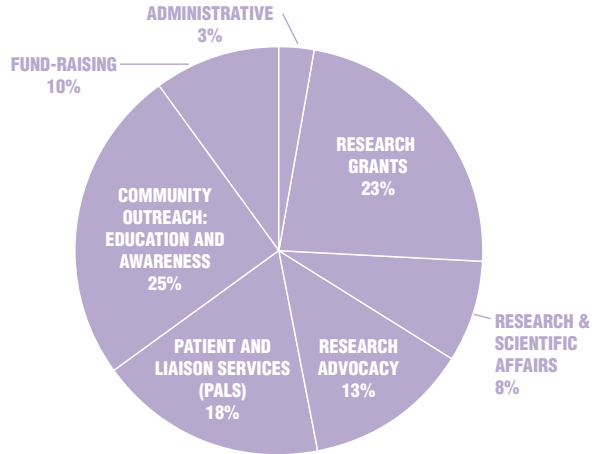
These financial statements were abstracted from Pancreatic Cancer Action Network's June 30, 2011 and June 30, 2010 financial statements which were audited by Windes & McClaughry Accountancy Corporation. Because the information does not include all the disclosures required by U.S. generally accepted accounting principles, it does not purport to present Pancreatic Cancer Action Network's financial condition or results of activities. A copy of the audited financial statements is available on the Pancreatic Cancer Action Network's website at www.pancan.org and can be provided upon request from our national office.



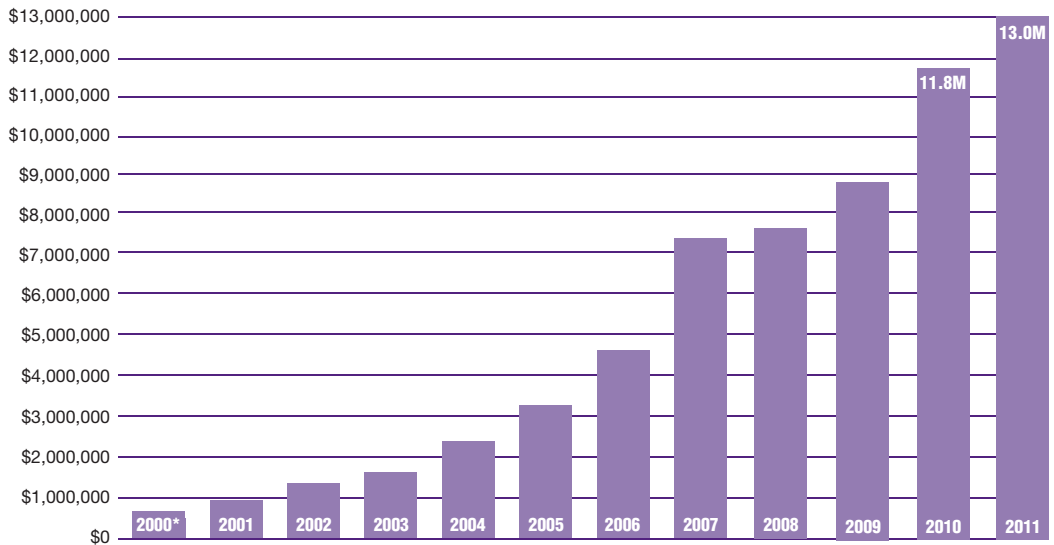
INCOME SOURCES 2011



EXPENSES 2011



INCOME 2000-2011



*Includes the 16-month period from February 15, 1999 to June 20, 2000.